

Images for Pamella Guerdat, 'Through the appraisal process : René Gimpel (1881–1945) and Nicolas Poussin's *Self-Portrait*, from rediscovery to de-attribution'



Fig. 1. Unnamed, *Portrait of René Gimpel (1881–1945)*, c. 1925, Paris, photograph, c. 8 x 5 cm
© London: Gimpel Fils Gallery. Photo: Gimpel Fils



Fig. 2. Nicolas Poussin, *Self-Portrait (Chantelou)*, 1650, oil on canvas, 98 x 74 cm
© Paris: Musée du Louvre. Photo: RMN-Grand-Palais (Musée du Louvre) / Jean-Gilles Berizzi



Fig. 3. Jean Pesne, after Nicolas Poussin, *Nicolas Poussin Self-Portrait* (Pointel), after 1660, line engraving, 24.7 x 36 cm
 © Chantilly: Musée Condé. Photo: RMN-Grand Palais (domaine de Chantilly) / Michel Urtado



Fig. 4. Nicolas Poussin, *Self-Portrait* (Pointel), 1649, oil on canvas, 78.7 x 64.8 cm
 © Berlin: Gemäldegalerie (SMPK), Photo: BPK, Berlin / Jörg P. Anders



Fig. 5. Unnamed, After Nicolas Poussin, *Self-Portrait* (Pointel), undated (probably seventeenth century), oil on canvas, 89 x 67 cm
© London: Gimpel Fils Gallery. Photo: Gimpel Fils

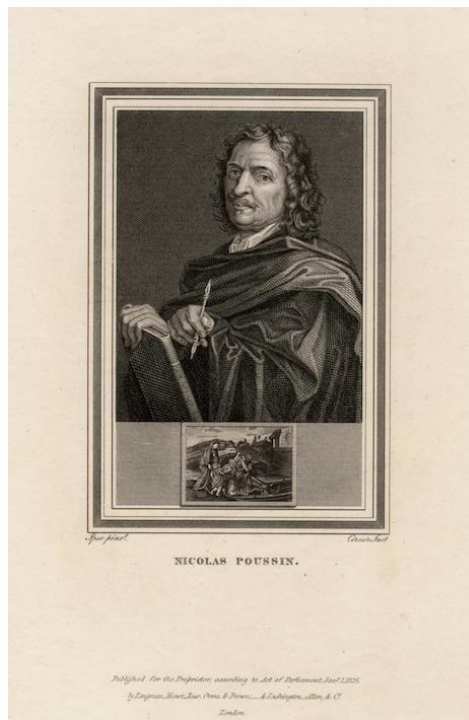


Fig. 6. John Corner, after Nicolas Poussin, *Nicolas Poussin Self-Portrait* (Pointel), 26.8 x 20.4 cm, line engraving, 1 January 1816, published by Longman, Hurst, Rees, Orme & Brown, and published by Lackington, Allen & Co., in *Portraits of celebrated painters*

© London: British Museum. Photo: The Trustees of the British Museum

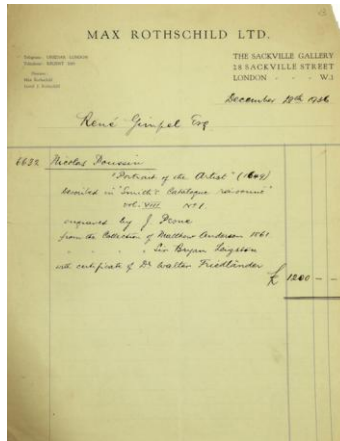


Fig. 7. Invoice from the Sackville Gallery, Max Rothschild, 29 December 1936
 © London: Gimpel Fils Gallery. Photo: Gimpel Fils



Fig. 8. René Gimpel, Analytical document of the Nicolas Poussin's *Self-Portrait* and Jean Pesne engraving (in opposite direction), c. 1936, extract
 © London: Gimpel Fils Gallery. Photo: Gimpel Fils

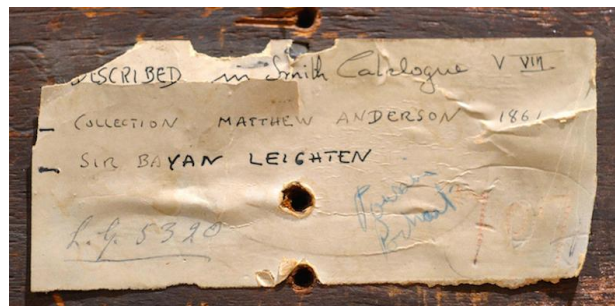


Fig. 9. Unnamed, After Nicolas Poussin, *Self-Portrait* (Pointel), undated (probably seventeenth century), oil on canvas, 89 x 67 cm, detail, label on the back of the picture with provenance written by René Gimpel
 © London: Gimpel Fils Gallery. Photo: Gimpel Fils



Fig. 10. Circle of Konrad Witz, *Pietà without Donor*, c. 1440, tempera and oil on panel, 33.3 x 44.5 cm
© New York: The Frick Collection. Photo: The Frick Collection



Fig. 11. French, Probably South of France, *Pietà with Donor*, fifteenth century, tempera or mixed technique on panel, 39.7 x 55.9 cm
© New York: The Frick Collection. Photo: The Frick Collection



Fig. 12. Titian, *Tobias and the Angel*, now *Portrait of a Lady and Her Daughter*, c. 1550, oil on canvas, 88.3 x 80.6 cm
(before and after restoration)
© Private collection, United Kingdom

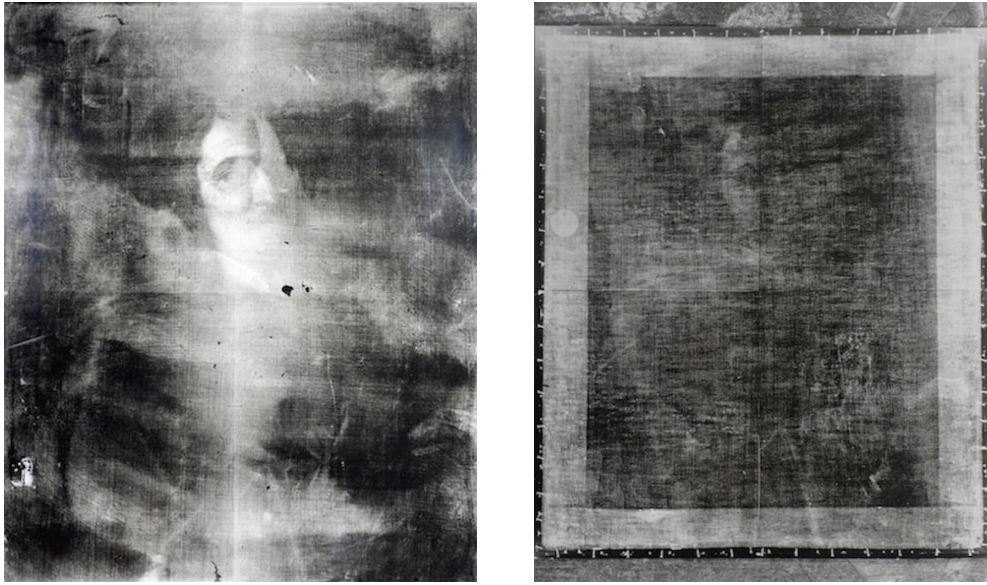


Fig. 13. Unnamed, After Nicolas Poussin, *Self-Portrait* (Pointel), undated (probably seventeenth century), oil on canvas, 89 x 67 cm, radiographs of the painting, c. 1960s/1990s
© London: Gimpel Fils Gallery. Photo: Gimpel Fils



Fig. 14. Jean Gimpel, Confrontation of the Nicolas Poussin *Self-Portrait* from Berlin and the Gimpel version, Royal Academy, London, 24 March 1995, photograph
© London: Gimpel Fils Gallery. Photo: Gimpel Fils